

PACIFIC HEADS OF HEALTH

Réunion des directeurs de la santé du Pacifique

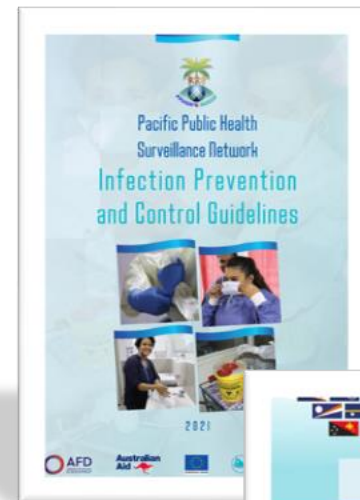
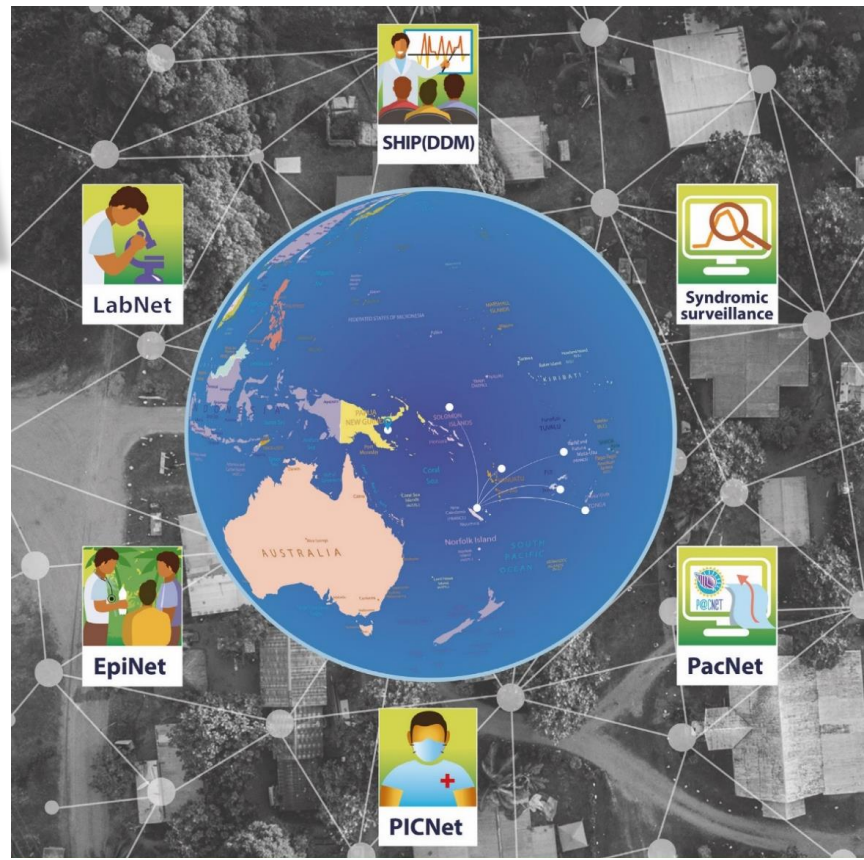
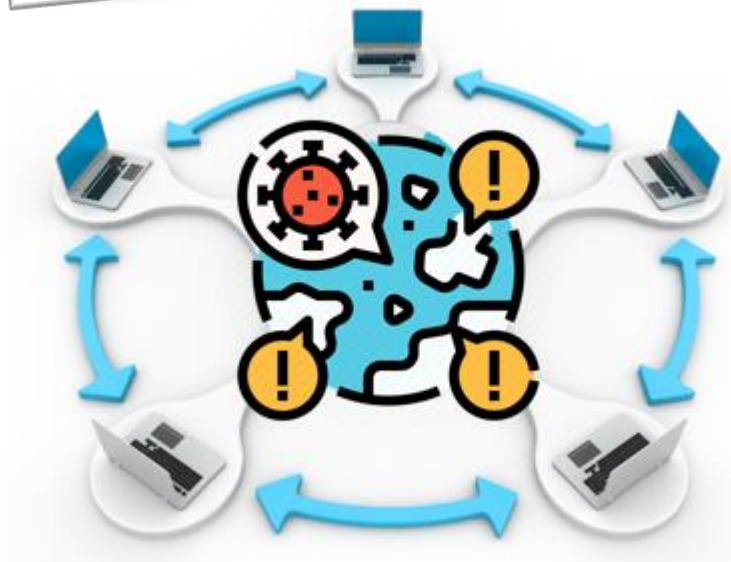


Pacific Public Health Surveillance Network update and the call for data sharing agreements

Presented by: Dr Reynold 'Ofanoa,
CEO for Health, Tongan Ministry of Health

On behalf of the PPHSN-Coodinating Body and core members

Current situation



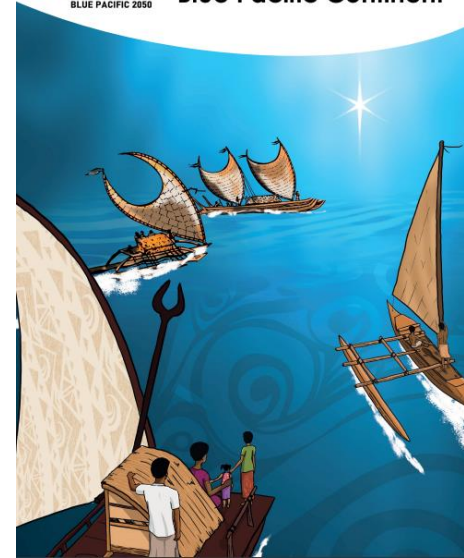
Future vision



Multi-source disease surveillance systems
+
Early Warning Systems
=
Adapting to future health threats brought by climate change



2050 Strategy for the Blue Pacific Continent

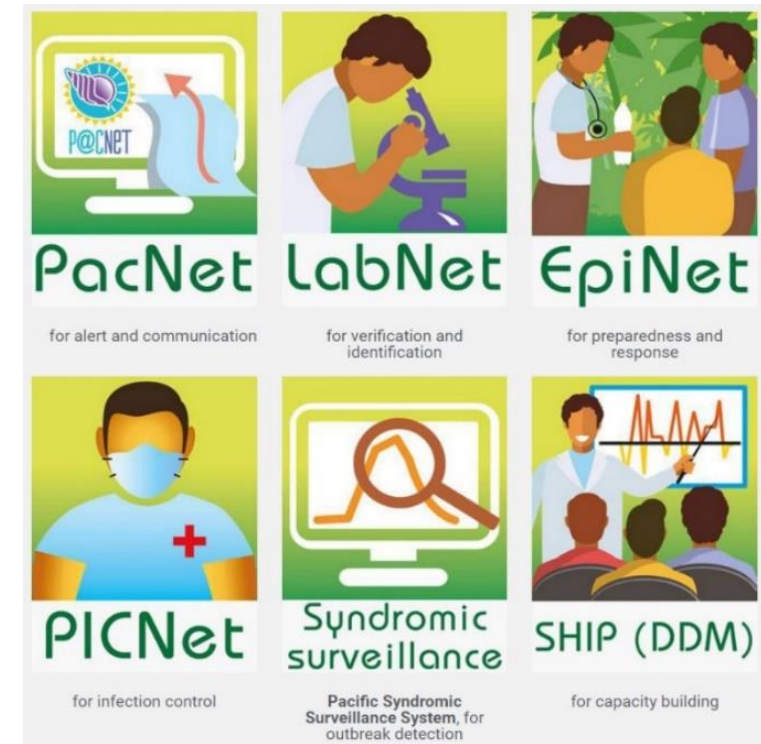


Recent progress – External review of PPHSN



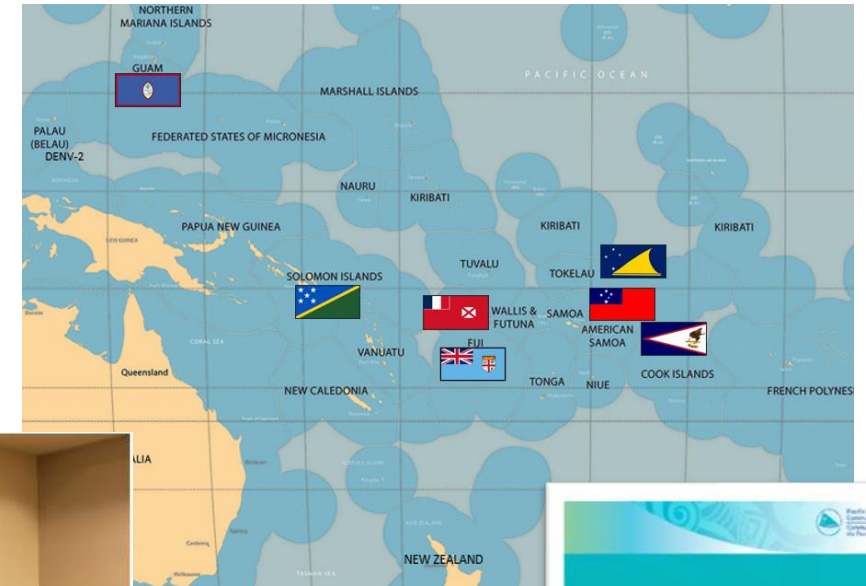
Focused on

- Governance
- Communication structures and mechanisms
- Effectiveness of six services of PPHSN



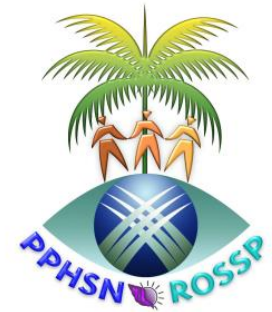
Recent progress – Pacific Vector Network (PVN)

- PVN launched in Hawai'i in June 2023
- 7 PICT representatives selected for the PVN technical working body until 2025
- Secretariat support from PIHOA, SPC and WHO



Recent progress – PPHSN meetings in 2023

- PICNet Meeting in Nadi, 24-26 May
- Launch of the Pacific Vector Network (PVN) in Honolulu, 5-7 June
- 25th meeting of the PPHSN Coordinating Body in Honolulu, 24 July
- EpiNet/LabNet regional meeting in Honolulu, 25-28 July




Recent progress – publications, guidelines, reports

Pacific Syndromic Surveillance System
Weekly Bulletin


Système de Surveillance Syndromic dans le Pacifique
Bulletin Hebdomadaire

W11 2024 (Mar 11-Mar 17)

WHO gratefully acknowledges the support of Ministries of Health and partners in the following Pacific Island Countries and areas for the contribution of data to this bulletin
L'OMS reconnaît avec reconnaissance le soutien des ministères de la santé et des partenaires dans les pays insulaires du Pacifique suivants pour la contribution des données à ce bulletin:

PPHSN National/Territorial EpiNet Teams
Equipes nationales/territoriales EpiNet du ROSSP

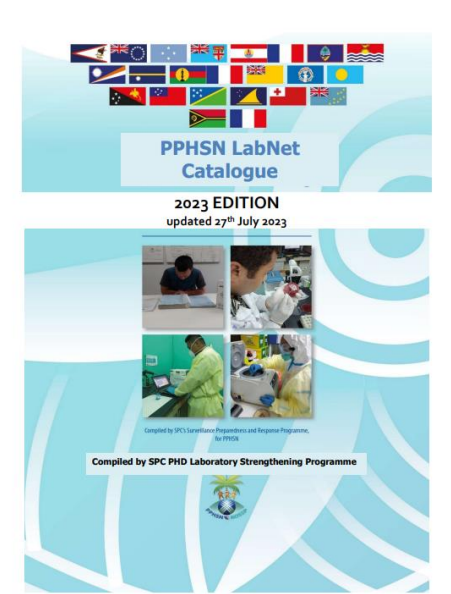



Réseau océanien de surveillance de la santé publique

Lignes directrices pour la lutte anti-infectieuse

2021

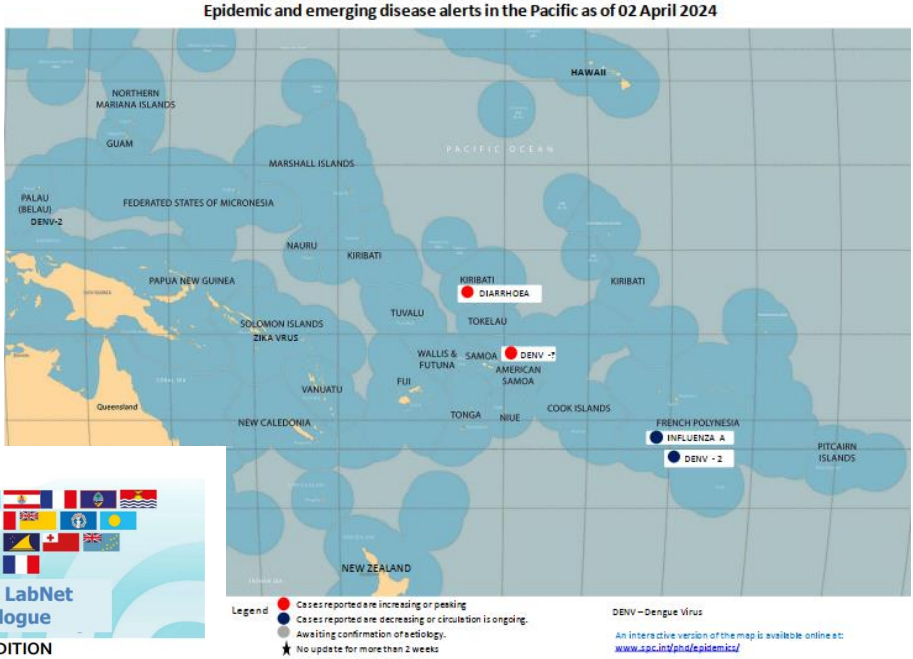
AFD, Australian Aid, Pacific Community logos



PPHSN LabNet Catalogue

2023 EDITION
updated 27th July 2023

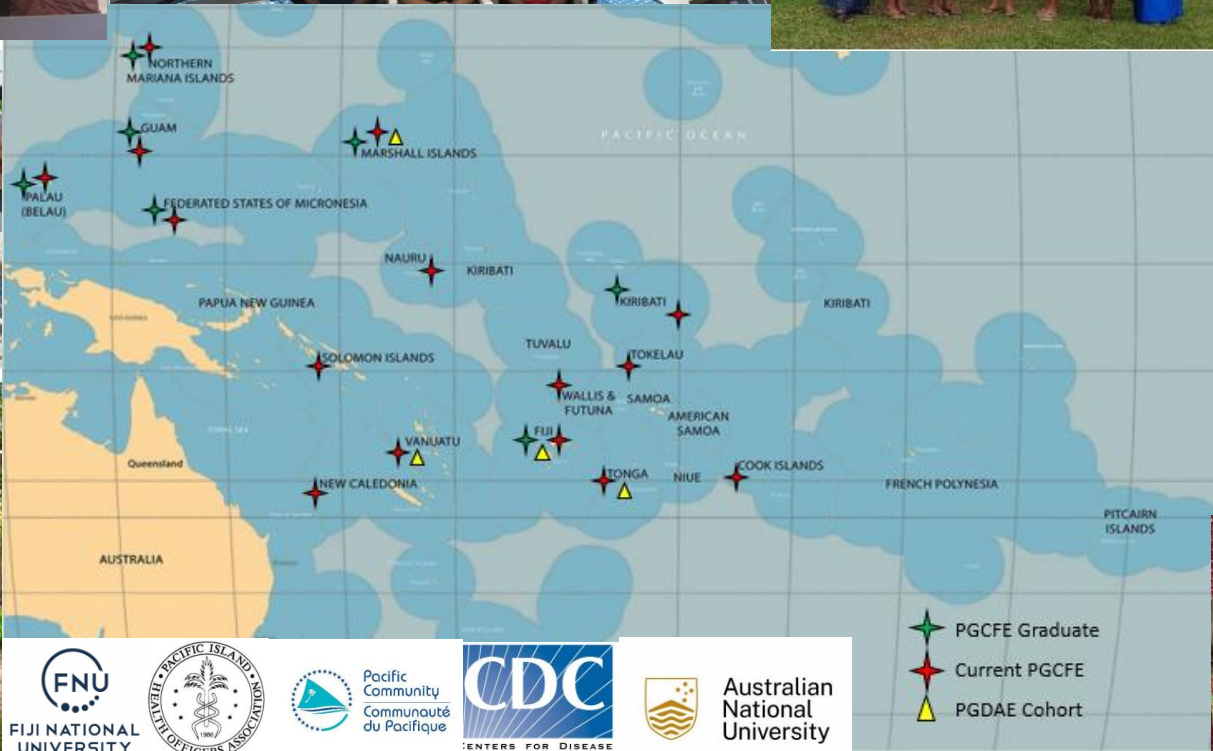
Compiled by SPC PHD Laboratory Strengthening Programme



Recent progress – SHIP-DDM



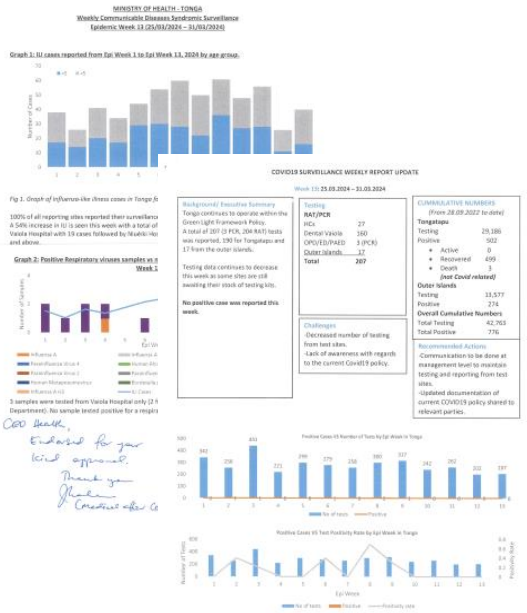
PGCFE
63 in 2023
(+130 2019-2022)



- ★ 63 participants have graduated from PGCFE in December 2023
- ★ 15 PICTs have undertaken PGCFE training between Jan 2023 – March 2024.
- ▲ 4 PICTs are currently undertaking PGDAE



Recent progress – Data sharing



CEO thank
I'm glad for your kind approval.
Thank you
Christina

Bulletin de surveillance sanitaire
Polynésie française - N°13/2024
Données consolidées jusqu'à la semaine 513-2024

Actualités

Information à la Une
La ciguatera en Polynésie française

Départ
Tahiti, Moorea, Rangiroa et Bora Bora tirent en phase d'attente.
Fakaofo passe en phase d'attente.
Co-circulation de DEN-1 et DEN-2.

Actualités
Tahiti, Moorea, Rangiroa et Bora Bora tirent en phase d'attente.
Fakaofo passe en phase d'attente.
Co-circulation de DEN-1 et DEN-2.

Information à la Une
La ciguatera en Polynésie française

Départ
Tahiti, Moorea, Rangiroa et Bora Bora tirent en phase d'attente.
Fakaofo passe en phase d'attente.
Co-circulation de DEN-1 et DEN-2.

Actualités
Tahiti, Moorea, Rangiroa et Bora Bora tirent en phase d'attente.
Fakaofo passe en phase d'attente.
Co-circulation de DEN-1 et DEN-2.

Commonwealth Healthcare Corporation
Commonwealth of the Northern Mariana Islands

CNMI Weekly Syndromic Surveillance Report

EPI WEEK 13 **EPI WEEK DATE:** March 24 – March 30, 2024

Clinic	Influenza-like illness (ILI)		Diarrhea (DIA)		Prolonged Fever (PF)		Acute Fever and Rash (AFR)		Total Encounters	
	Last week	Current week	Last week	Current week	Last week	Current week	Last week	Current week	Last week	Current week
CHCC Family Care Clinic	0	0	0	0	2	0	0	0	307	217
CHCC Women's Clinic	0	0	0	0	0	0	0	0	77	80
CHCC Children's Clinic	3	5	4	3	11	5	0	0	222	166
CHCC Emergency Room	11	25	10	6	11	13	0	0	427	423
Kagman Isla Community Health	7	7	1	0	0	3	0	0	135	108
Tinianian Isla Health	0	1	0	0	0	0	0	0	38	48
Southern Isla Community Health	6	6	2	0	0	0	0	0	113	86
CHCC Tinian Health Center	4	3	0	0	1	1	0	0	31	61
CHCC Rota Health Center	0	0	0	0	1	0	0	0	58	49
Total	31	47	17	9	26	22	0	0	1408	1238

KEY TAKEAWAYS

- 12% Decrease in Total Encounters from the last Epi Week to the current Epi Week.
- 36% Increase in Influenza Like Illness cases were seen this Epi Week (#13) compared to the average of the previous 3 Epi Weeks (#12, 11, & 10).
- 14% Increase in Prolonged Fever cases were seen this Epi Week (#13) compared to the average of the previous 3 Epi Weeks (#12, 11, & 10).
- 2 Flu B
- 16 COVID-19 cases

ALERTS AND TRENDS

- ILI: Increase from previous week
- PF: Decrease from previous week
- AFR: Stable from previous week
- DIA: Decrease from previous week

Total Number of Influenza-like Illness (ILI) Cases Reported in the CNMI by Epi Week, 2024

COVID Hospitalizations

Syndromes	Epi Week				% Change from current week to previous 3 weeks	COVID Hospitalizations	
	13	12	11	10		Date Range	Totals
Acute Fever and Rash	0	0	0	0	0%	March 24 – March 30, 2024	0
Prolonged fever	22	26	14	18	14%	March 17 – March 23, 2024	2
Influenza-like illness	47	31	46	27	36%	11/09/2021 – 03/30/2024	324
Diarrhea	9	17	12	6	-23%		

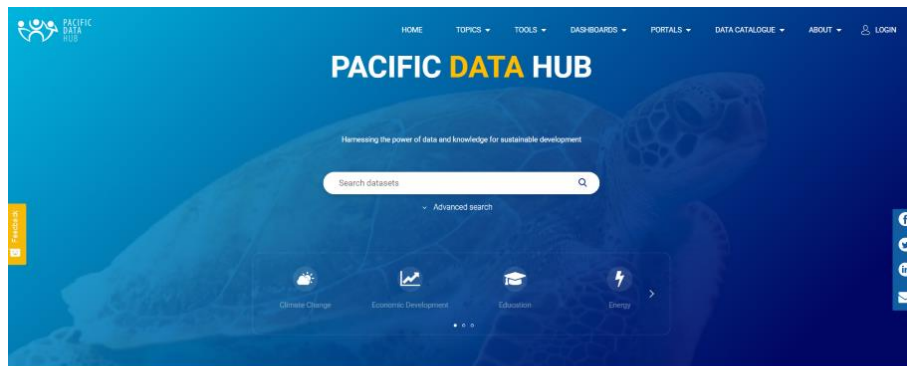
Tonga MOH Weekly Communicable Disease Syndromic Surveillance Report

French Polynesia Health Surveillance Report

CNMI Weekly Syndromic Surveillance Report

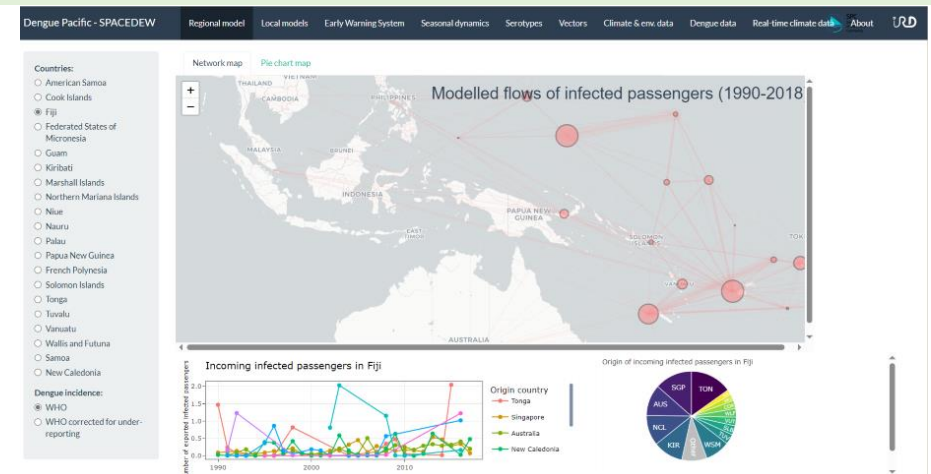
Why urgent action is needed now

Need for ongoing investment and enhancement of regional surveillance and response capabilities.



- Early Warning Systems / predictive models
- Leveraging technology to assist local health managers in assessing outbreak risks

- Data storage, visualisation, dissemination and repositories
- Standardised data sharing agreements for priority diseases
- Databases for longitudinal disease trend analysis



Recommendations to be considered...

For governments

- Start exploring data sharing agreements with regional technical agencies and development partners
- Note the newly launched Pacific Vector Network and support its nurturing and operations via the Technical Working Body and the intent to develop its strategic plan to guide the network activities

For development partners

- Start exploring data sharing agreements with PICTs
- Support the development and operations of the Pacific Vector Network as a new initiative of PPHSN

**Thank you
Malo 'Aupito
Fa'afetai**

