

Pacific Heads of Nursing & Midwifery Meeting

Réunion des directeurs des soins infirmiers et obstétricaux du Pacifique

Pacific Emergency Medical Teams (EMTs): Training and Equipping Nurses and Midwives for Deployable Health Emergency Response

Sean Casey

Health Emergency Officer

Regional EMT Focal Point

WHO– Western Pacific Regional Office (WPRO)

Pacific Heads of Nursing & Midwifery Meeting

Nadi, Fiji

14-16 November 2023

Nurses & Midwives – the backbone of Pacific EMTs

- Nurses leading the development and coordination of most Pacific Emergency Medical Teams
- Nurses comprise the largest cohort of health emergency responders
- Critical to continue training, and expand emergency skills – e.g. 25x25x25 initiative on BLS



Goal



Populations affected by **health emergencies** have access to quality, lifesaving and essential health services through **effective, scalable, interoperable** and **rapidly deployed** emergency medical **teams** and other **emergency capacities** fully integrated resilient, national health systems

Objectives of the EMT Initiative



History of the EMT Initiative



Lessons from Haiti



CLASSIFICATION AND
MINIMUM STANDARDS
FOR FOREIGN MEDICAL
TEAMS IN SUDDEN ONSET
DISASTERS

DISASTERS
TEAMS IN SUDDEN ONSET
FOR FOREIGN MEDICAL

- In clinical care and health response **“good intentions”** are not enough
- Principles, standards and quality count, even in “mega-disasters” and complex emergencies
- Operations support and logistics are as important as clinical skills
- National leadership and coordination is key but may need additional support
- A global governance system was required

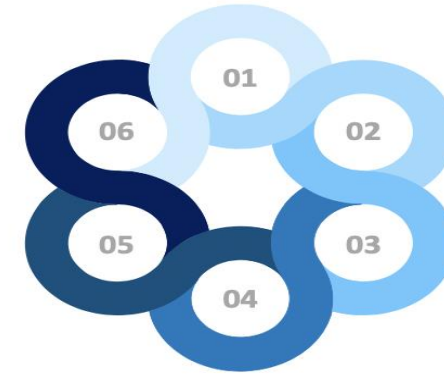
2021 – Emergency Medical Teams “Blue Book”



EMTs – Predictable Health Emergency Response

EMT GUIDING PRINCIPLES

Guiding principles translate an EMT commitment to pursuing quality care and apply to all EMTs, regardless of type



01 SAFE CARE

Avoid unnecessary harm to patients from care that was supposed to help them.

02 EQUITABLE CARE

Care is equally accessible and provided to all sections of the population affected by the emergency, particularly the vulnerable and those requiring protection.

03 ETHICAL CARE

Patients are always cared for in a medically ethical manner and care is based on scientific evidence.

04 ACCOUNTABLE RESPONSE

Commitment to be accountable to patients and communities, the host governments, ministries of health, their organizations and donors.

05 APPROPRIATE RESPONSE

Needs driven response according to context and type of emergency, and respectful of community values and beliefs.

06 COORDINATED RESPONSE

Coordinated response under the national health emergency management authorities and across all levels of the health system to ensure continuity of care. Collaboration with the national health system, their fellow EMTs, and the international humanitarian response community where relevant.

EMERGENCY MEDICAL TEAMS SUPPORT TO SAMOA MEASLES OUTBREAK RESPONSE



In 2019, the Pacific island country of Samoa experienced an unprecedented outbreak of measles including **more than 5700 cases**, **83 measles-related deaths** and **more than 1800 hospitalizations** recorded between October 2019 and January 2020.

18 international Emergency Medical Teams (EMTs) deployed to support Samoa's measles outbreak response

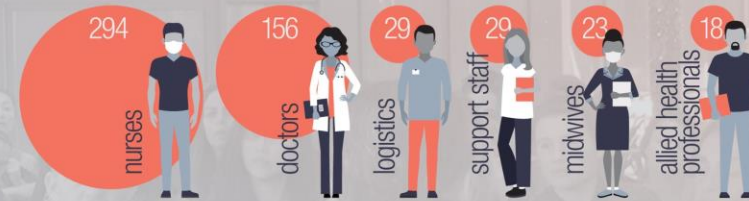


134 499 individuals
=
95% of eligible population



vaccinated against measles in a massive campaign over several weeks

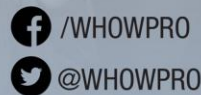
557 total EMT personnel deployed to support Samoa measles outbreak response



Working hand-in-hand with Samoan health workers, EMTs provided support in:



- Measles case management
- Vaccination
- Epidemiology and surveillance
- Provision and maintenance of medical equipment and supplies
- Mental health and psychosocial support to staff and patients





TYPE 1 MOBILE

Provide outpatient initial emergency care of injuries and other significant health care needs



TYPE 1 FIXED

Same as Type 1 Mobile but work out of a fixed structure and provide up to 12 hours per day of care, 7 days a week.



TYPE 2

Provide emergency care including surgery, 24 hours a day.
Deploy field hospitals with at least 20 beds and can replace and support small district hospitals.



TYPE 3

Provide inpatient referral care and complex surgery. Provide large 40-100 bed facilities and can support and replace tertiary hospitals.



SPECIALIZED TEAMS

Specialize in specific medical area. May be as small as two three senior specialists, or a specialist facility eg. Ebola or Rehabilitation.
Must bring appropriate equipment and supplies with them.

WHO Verified/Classified EMTs in the Western Pacific Region

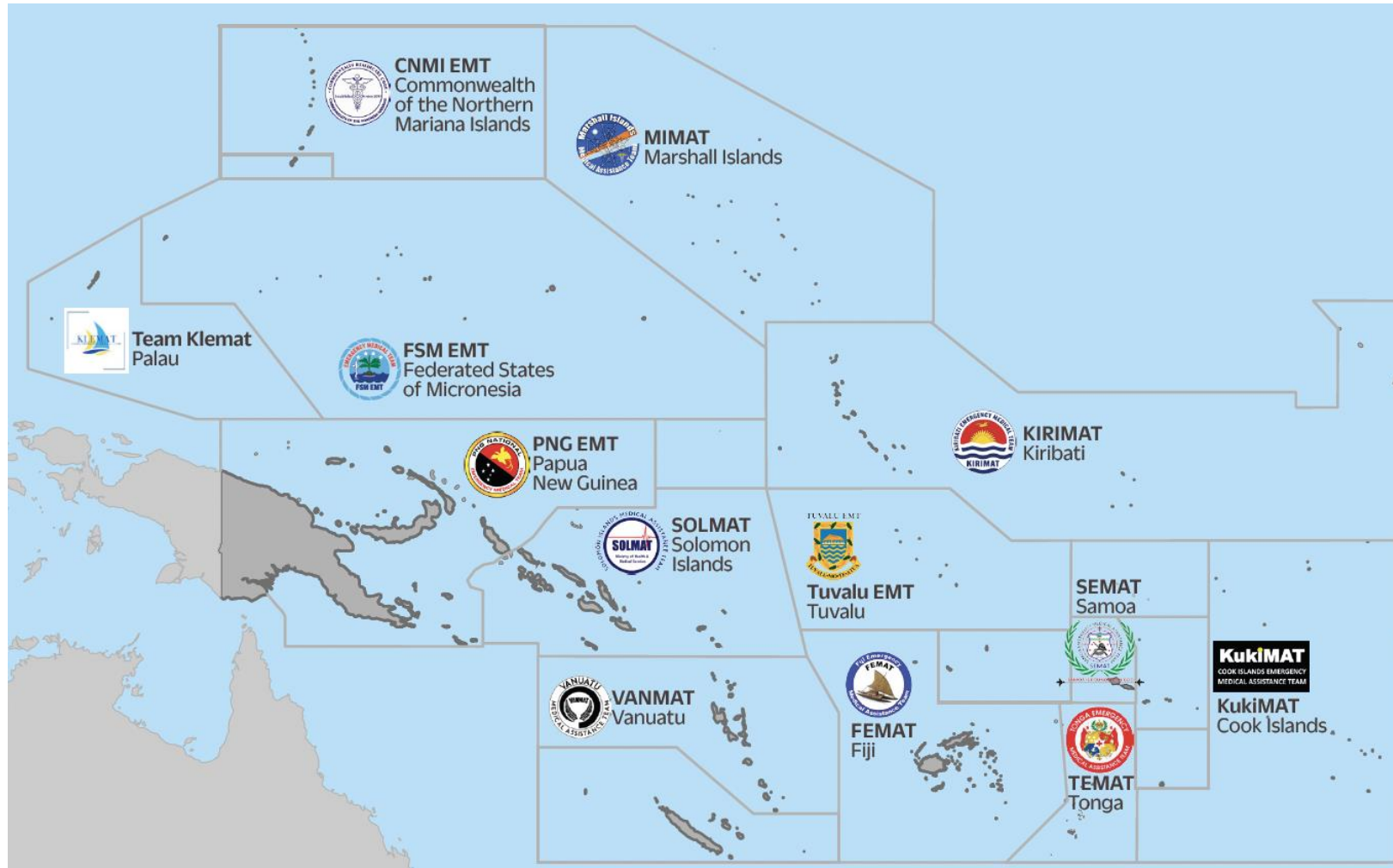
Classified international EMTs (12 WPR EMTs of 40 globally classified EMT)

- AUSMAT (Australia)
- Aspen Medical (Australia)
- China International EMT (5)
- **FEMAT (Fiji)**
- JDR (Japan)
- KDRT (Republic of Korea)
- Mercy Malaysia
- NZMAT (New Zealand)

Twelve EMTs currently working towards international verification/classification

- Backpacker Medics (Australia)
- China International EMT (x3)
- Humanitarian Medical Assistance (HuMA - Japan)
- **PACMAT (New Zealand)**
- PeaceWinds (Japan)
- PEMAT (Philippines)
- Mongolia Military EMT (MONMIL EMT)
- Respond Global (Australia)
- Singapore EMT (SGEMT)
- Tokushukai Medical Assistance Team (TMAT) (Japan)

Expanding EMTs Across the Pacific



Recent/Upcoming Pacific EMT Courses/Exercises

- Two EMT training courses in the Solomon Islands ahead of Pacific Games and cyclone season, and two held in Vanuatu in October
- Full-scale exercise in Samoa in early November 2023
- Team member trainings happening this week in the Cook Islands and Federated States of Micronesia
- EMT orientation workshop in French Polynesia in December 2023 and team member trainings in RMI and Tuvalu in early 2024
- Currently supporting all South Pacific EMTs to be ready for the cyclone season - operational/cache readiness



Recent Pacific EMT Deployments

- FEMAT national deployment for outbreaks and disasters, as well as to Tuvalu and Vanuatu for COVID-19
- VanMAT (Vanuatu) national deployments for Tropical Cyclones Judy, Kevin and Lola in 2023
- MIMAT (Marshall Islands) deployments for COVID-19 response on outer islands in 2022
- Pasifika Medical Association EMT (PACMAT) deployment to Tonga – volcano/tsunami response, and recently within NZ
- Tonga Emergency Medical Assistance Team (TEMAT) to Ha'apai Islands – volcano/tsunami response in 2022



Pacific EMT Donor-Partners



Australian Government

Department of Foreign Affairs and Trade



**World Health
Organization**



EUROPEAN UNION



JAPAN GOV
THE GOVERNMENT OF JAPAN



**NEW ZEALAND
FOREIGN AFFAIRS & TRADE
Manatū Aorere**

USAID

FROM THE AMERICAN PEOPLE

Thank you!

Any questions?

For more information...



 <http://extranet.who.int/emt/>

 scasey@who.int