

Pacific Heads of Nursing & Midwifery Meeting

Réunion des directeurs des soins infirmiers et obstétricaux du Pacifique



Pasifika Medical Association Group

November 2023

Presented by Dr Veisia Matoto,
Clinical Director NZMTS

PMA Group Board



Dr Kiki Maoate
ONZM FRACS
Chairperson



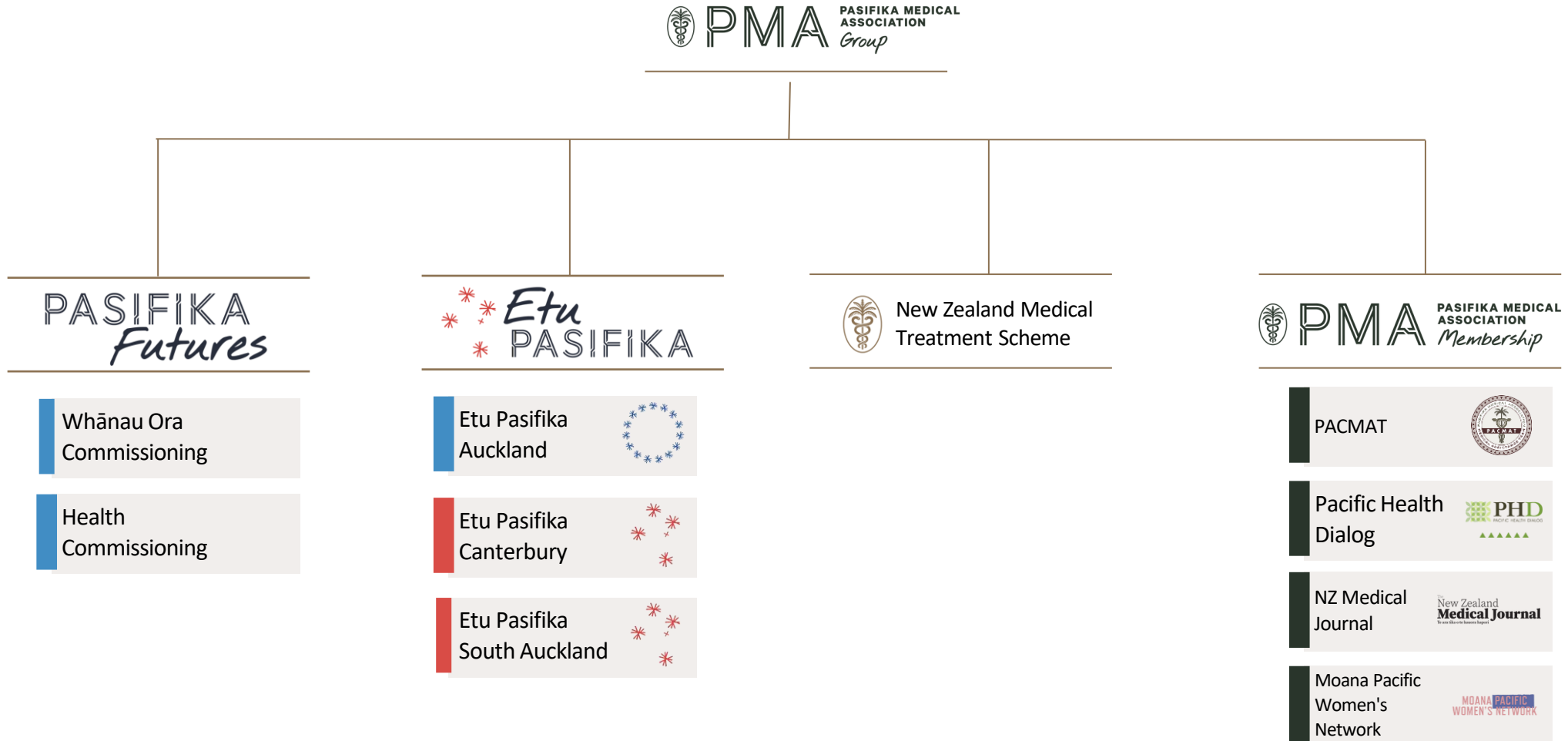
Sir Collin Tukuitonga
KNZM FNZCPHM



Dr Frances Agnew
MNZM FRANZCP
FACHAM

Pasifika Medical Association Group

Clinically Led, Culturally Anchored, Family Driven





PACMAT Emergency
Response



Humanitarian Assistance

- 2009 Samoa Tsunami
- 2011 Christchurch earthquake
- 2015 Cyclone Pam Vanuatu
- 2016 Cyclone Winston Fiji
- 2017 Francie Boat Sinking, Katikati Car Crash, Gisborne Bus Crash
- New Zealand
- 2018 Cyclone Gita Tonga
- 2019 Measles Samoa
- 2022 Tonga Volcanic Eruption Niue COVID -19 Deployment
- 2023 Cyclone Judy and Cyclone Kevin Vanuatu

PMA has led training for the NZ Fire Service in Cultural responses in Humanitarian settings, and delivered sessions as part of NZMAT training. PMA has facilitated the training through AUSMAT and NZMAT of over 60 clinical, allied health and logistical staff from NZ and the region.

Nurses are Everything

- Approximately 70 nurses have been deployed by PACMAT since 2019- (Many of these on multiple deployments)
- There are currently 124 Nurses registered on the PACMAT Database. Breakdown by area of nursing specialty (to note this comes to more than 70 when listing by specialty as some nurse specialise over multiple areas):
 - **46** General Practice Nurses
 - **19** Mental Health / Psycho-social Nurses
 - **16** Community Health Nurses
 - **7** Primary care Nurses
 - **7** Paediatrics Nurses
 - **5** ICU Nurses
 - **5** Surgical Nurses
 - **3** Specialised VAX Nurses
 - **3** Diabetes Nurses
 - **3** Midwifery Nurses
 - **2** Emergency Medicine Nurses
 - **2** Cardiac Nurses
 - **2** Public Health Nurses
 - **2** Nurse Practitioners
 - **1** Internal Medicine Nurse
 - **1** Post-Anaesthetic Care Nurse



Nurses Employed ETU Pasifika Clinics

ETU Pasifika Christchurch Clinic Nurses employed

- 1 Nurse Lead
- 1 Nurse Workforce Manager
- 2 Registered Nurse Prescribers
- 8 Registered Nurses
- 2 Healthcare Assistants

ETU Pasifika Auckland and ETU Pasifika South Auckland Clinics Nurses employed

- 1 Nursing Director (for all three Etu Pasifika Clinics)
- 1 Nurse Workforce Manager
- 2 Registered Nurse Prescribers
- 11 Registered Nurses
- 2 Mental Health Nurses
- 2 Healthcare Assistants starting in February 2024



Membership Activities



\$570k in PMA Health Scholarships



Events for students & trainees

Webinars, Scholarship Cocktail, Barack Obama screening



Workforce development initiatives



Moana Women's Network





Nursing Scholarships

27 nursing scholarships valued at NZ\$260,000.00 have been awarded since 2019



New Zealand Medical Treatment Scheme

- Overseas Referral Scheme for treatment
- Visiting Medical Teams
- Strengthening Country Capacity
- Six Countries: Fiji, Kiribati, Samoa, Tonga, Tuvalu, Vanuatu
- \$22.5m over five years

Overseas Referral Scheme (ORS)

- Purpose: Increase the opportunities for men, women and children (who cannot afford it or do not have access) to specialized treatment not normally available in their home country.
- 5-year prognosis is desirable
- Clinical assessment in country is required
all referrals go to the Overseas Referral Committee



Visiting Medical Teams (VMT)

- To provide visiting health services in alignment with the strategic goals of partner countries and according to the identified need.
- To maximise opportunities for capability building through activities such as structured training or on-the-job training of medical, nursing and allied health staff.
- To alleviate pressure on local health system through high-volume treatment.



Visiting Medical Teams (VMT)

- Nurses supported for capacity building/training under VMT component - 35
- Opportunities for in-country nurses to learn by observation and working alongside their colleagues on the teams. PMAG constantly explores with country teams opportunities to build capacity building into the VMT visits.
- Team Medical Specialities – Anaesthesia, Cardiology, Paediatric Surgery, Endocrinology, Paediatric Oncology, Gynaecology, Urology, Paediatric Cardiology, Orthopaedic Surgery, Gastroenterology



Strengthening Country Capacity (SCC)

- To strengthen the specialist health services and to develop clinical guidelines, provide mentoring, support, and training.
- Strengthen health workforce capacity through training, the development of systems and protocols, and support for equipment and supplies.



Strengthening Country Capacity (SCC)

- Nurses supported for training under SCC component for the 6 NZMTS countries - **57**
- **Kiribati** – Pacific Emergency training in-country (49)
- **Tonga** – AO Trauma Course (3), PacEYES Conference (3)
- **Vanuatu** – Pacific Island Health Research (1), Rheumatic Heart Disease Symposium (1)

