



Pacific Biomedical Network Meeting



GIZO HOSPITAL



NATIONAL REFERRAL HOSPITAL



NAME: Edmond Piasi

DESIGNATION: Senior Bio technician

COUNTRY: Solomon Islands

TOPIC: Preventative maintenance

Pacific Biomedical Network Meeting

Challenges

WHAT ARE THE CHALLENGES FACED BY YOUR BIOMEDICAL SERVICES RELATING TO YOUR SPECIFIC TOPIC?

- *Developing a Policy for National function of the Biomed Department*
- *Manpower*
- *Lack of sufficient bench space to work and gaps in available tools*
- *No management training for manager in charge*
- *Capacity building.*
- *Lack of Finance, little recognition and priority for requests and needs for Biomed to do its functions*
- *Spare parts Availability*
- *Backup Services*
- *storage spaces*
- *Transport.*

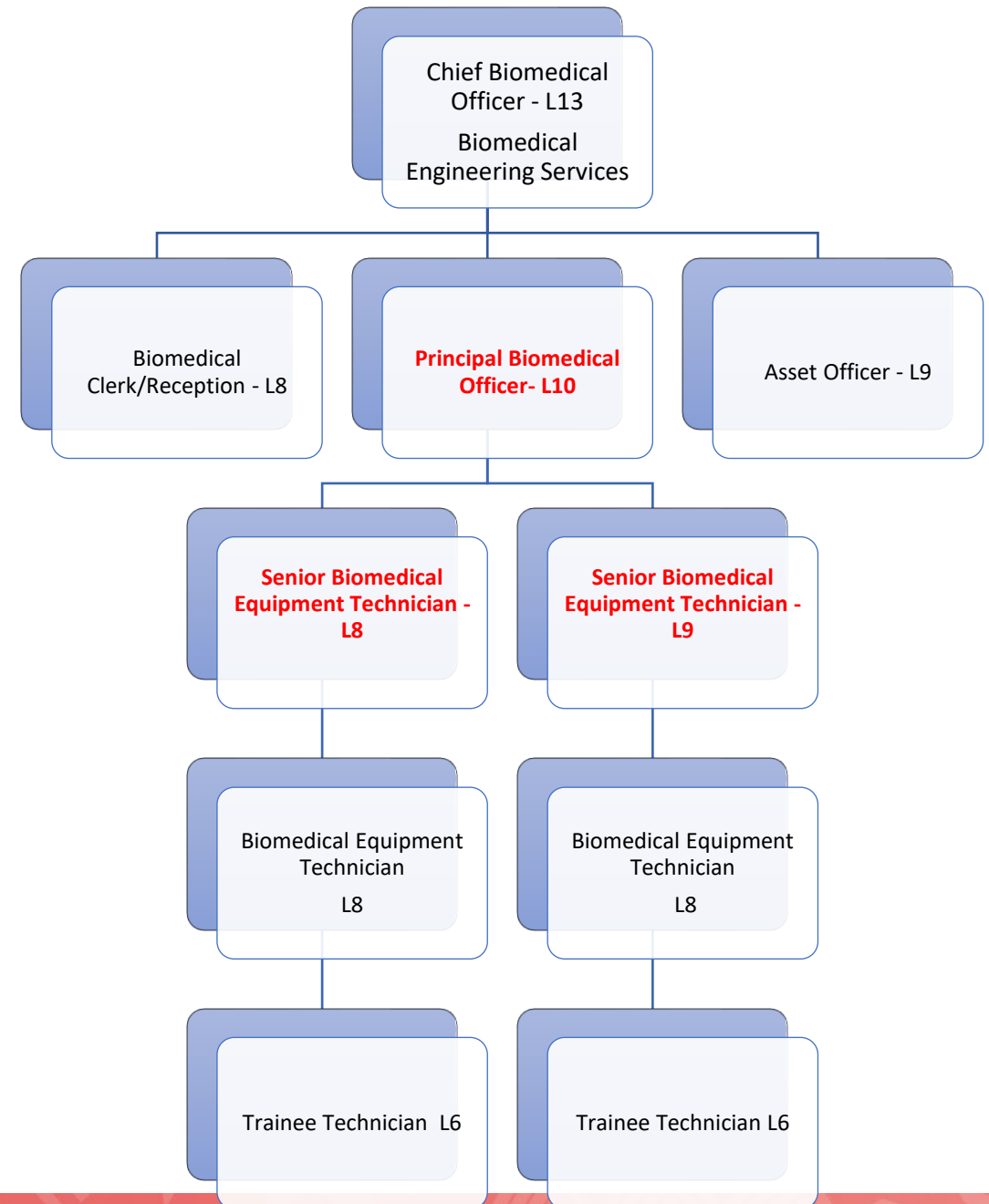
Opportunities & Development

- *WHAT ARE SOME OF THE OPPORTUNITIES AND DEVELOPMENTS THAT HAVE PROGRESSED IN YOUR BIOMED UNIT WITH REGARDS TO YOUR SPECIFIC TOPIC?*
- *Drafting of our National Biomedical Equipment policy*
- *Developing a New proposed structure for Biomedical Engineering Department*
- *Biomedical will soon performed a national Function*
- *Installation and Biomed to look after a new PSA plant, supplying all nation's medical oxygen needs. The higher-ups should now see the critical importance of the Biomed Department.*
- *On going refresher training for our technicians. Two years intervals*

Recommendations

- 3 MAIN RECOMMENDATIONS FOR YOUR COUNTRY **(PRIORITY AREAS)**
- **Performing National function/Developed National Biomedical Policy**
- **Restructuring /Recruiting new Engineers/Technicians**
- **Manager training to coordinate department maintenance work and maintenance management software**
- Proper storage space for Biomed Equipment Apart from NMS

Ongoing Restructuring





PACIFIC BIOMEDICAL NETWORK MEETING