

Pacific Biomedical Network Meeting





NAME: Margaret Leong

DESIGNATION: IPC Advisor

Organization: Pacific Community

**TOPIC: Infection Prevention &
Control**

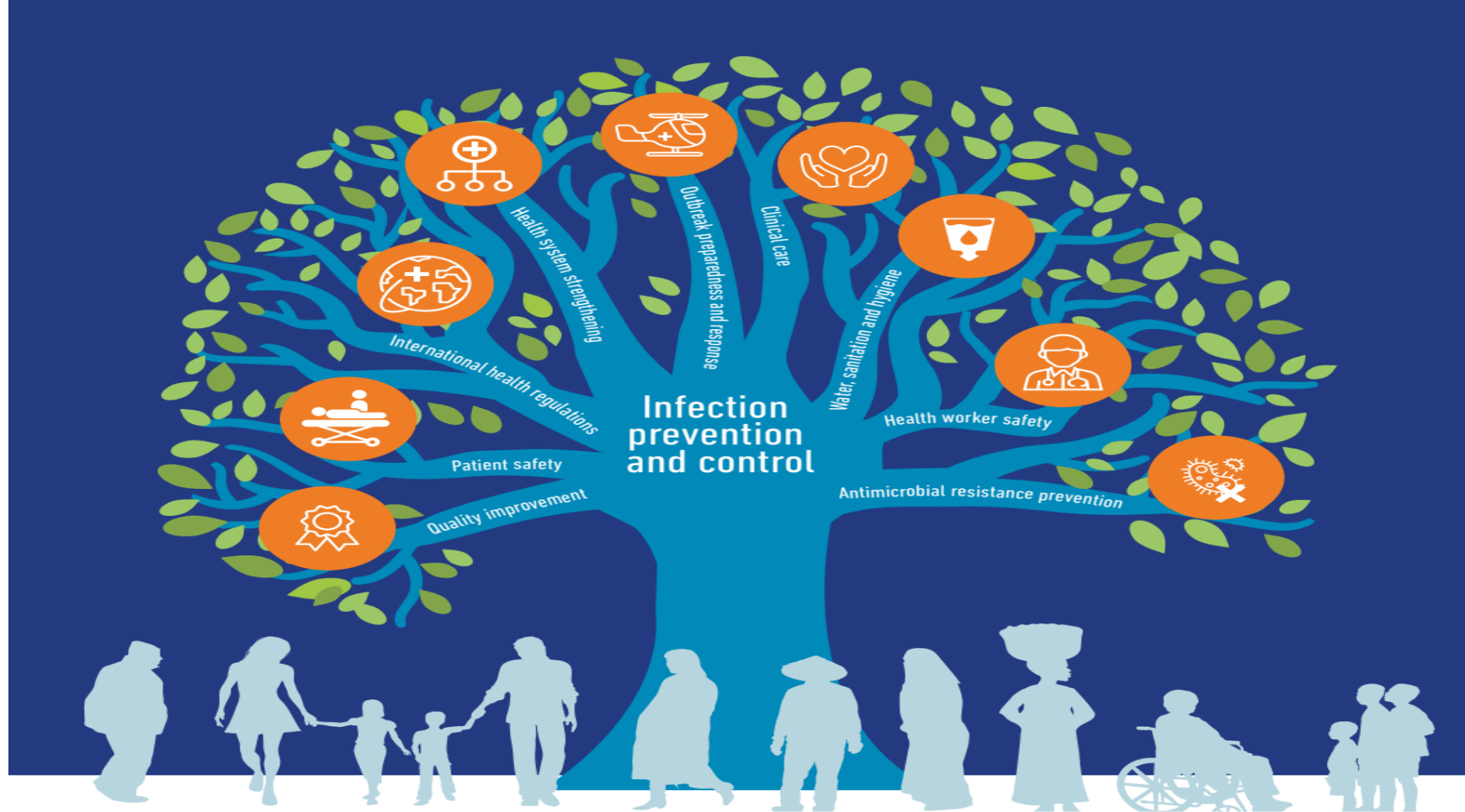
Evidence of IPC Effectiveness

> 70% reduction HAIs
with IPC Programs

25-57% reduction in
HAIs **with Surveillance**

50% Reduction **with**
hand hygiene
practices

13-50% reduction in
CLBI, SSI & MRSA **with**
strong IPC Plans

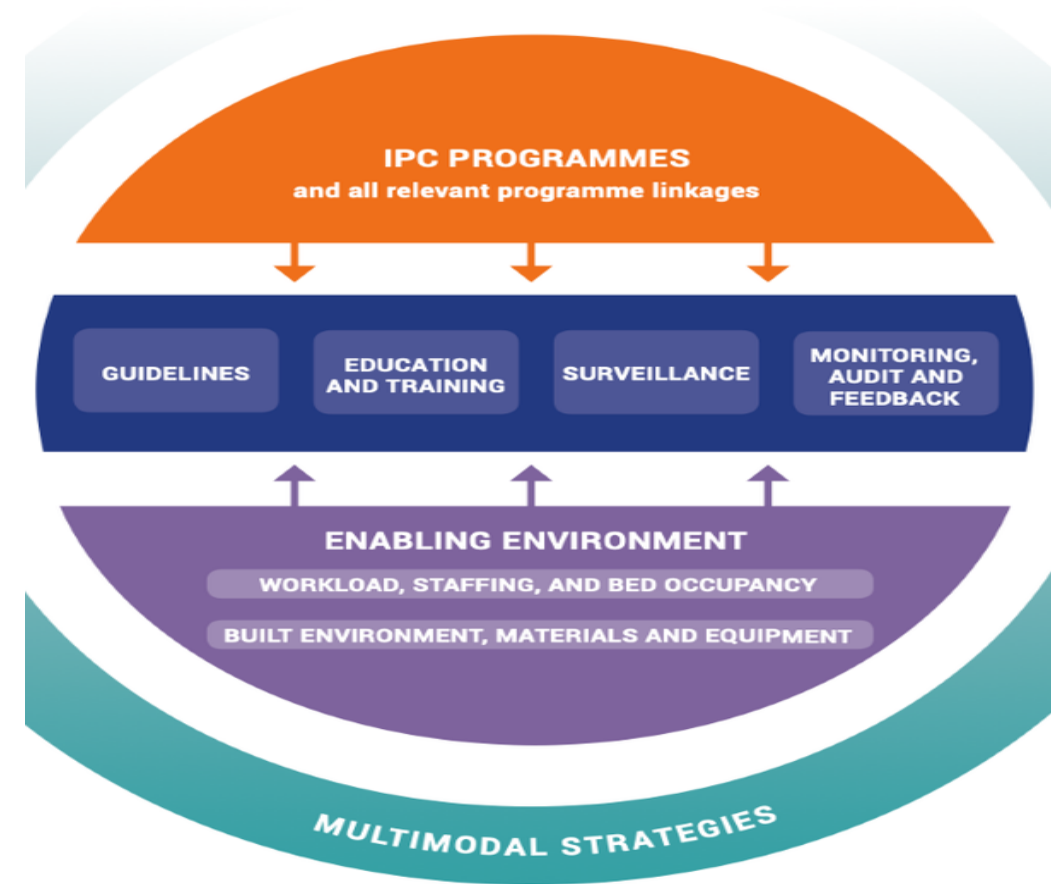


Global report on infection prevention and control



IPC Measures to Prevent HAI's and AMR

- The building blocks of IPC and WASH in health care facilities are:
 - Effective hygiene practices, including hand hygiene
 - Core components of IPC programmes
 - A clean, well-functioning Environment and Equipment



Survival time, Infectious dose and Prior Occupancy Risk by Pathogen

Microorganism	Survival time
MRSA	7 days to >12 months
VRE	5 days to >46 months
<i>Clostridium difficile</i>	>5 months
<i>A. baumannii</i>	3 days to 5 months
<i>E. coli</i>	2 hours to 16 months
<i>Klebsiella spp.</i>	2 hours to 30 months
Norovirus	8 hours to 7 days

Source: Dancer SJ. Controlling hospital-acquired infection: focus on the role of the environment and new technologies for decontamination. Clin Microbiol Rev. 2014;27(4):665–90.

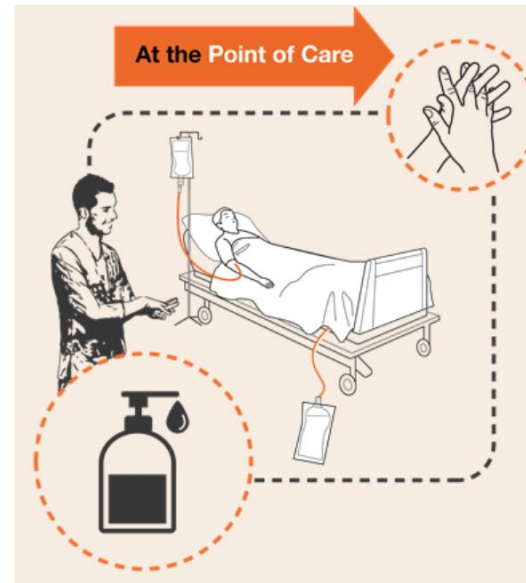
Medical equipment cleaning

- Depends on type of equipment: clean according to the manufacturer's instructions and written protocols (e.g. after each patient use, daily or weekly)
- Schedules and procedures should be consistent and updated on a regular basis
- Education and practical training must be provided to all cleaning staff
- Assign clear responsibility: who is going to clean/disinfect which items and equipment (cleaning staff or nurses)?



Recommendations

- Involve IPC when deciding on equipment - procurement
- Ensure cleaning and disinfection instructions are available
- **Understand the IPC measures that are in place**
- **Shortage of equipment is a major challenge**



Source: <https://www.who.int/campaigns/world-hand-hygiene-day/2023>



CONTACT PRECAUTIONS

In addition to *STANDARD PRECAUTIONS*

All visitors must check with staff before entry to the room



STAFF REQUIREMENTS

BEFORE ENTRY TO THE ROOM



Perform hand hygiene before entering the room



Put on a disposable gown or apron



Put on gloves

ON LEAVING THE ROOM



Remove gloves



Perform hand hygiene



Remove disposable gown or apron



Perform hand hygiene

STANDARD PRECAUTIONS

- ▶ Perform hand hygiene before and after every patient contact
- ▶ Use PPE when risk of body fluid exposure
- ▶ Safe injection practice and disposal of sharps
- ▶ Perform environmental cleaning
- ▶ Clean and reprocess shared patient equipment
- ▶ Respiratory hygiene and cough etiquette
- ▶ Safe handling and disposal of waste
- ▶ Safe handling of linen



For more information, please contact the Public Health Division of the Pacific Community (SPC) www.spc.int