

Pacific Biomedical Network Meeting





Ms. Kulakimata Vaha

Biomedical Technician Trainee

NIUE

Challenges of Human Resources

Pacific Biomedical Network Meeting

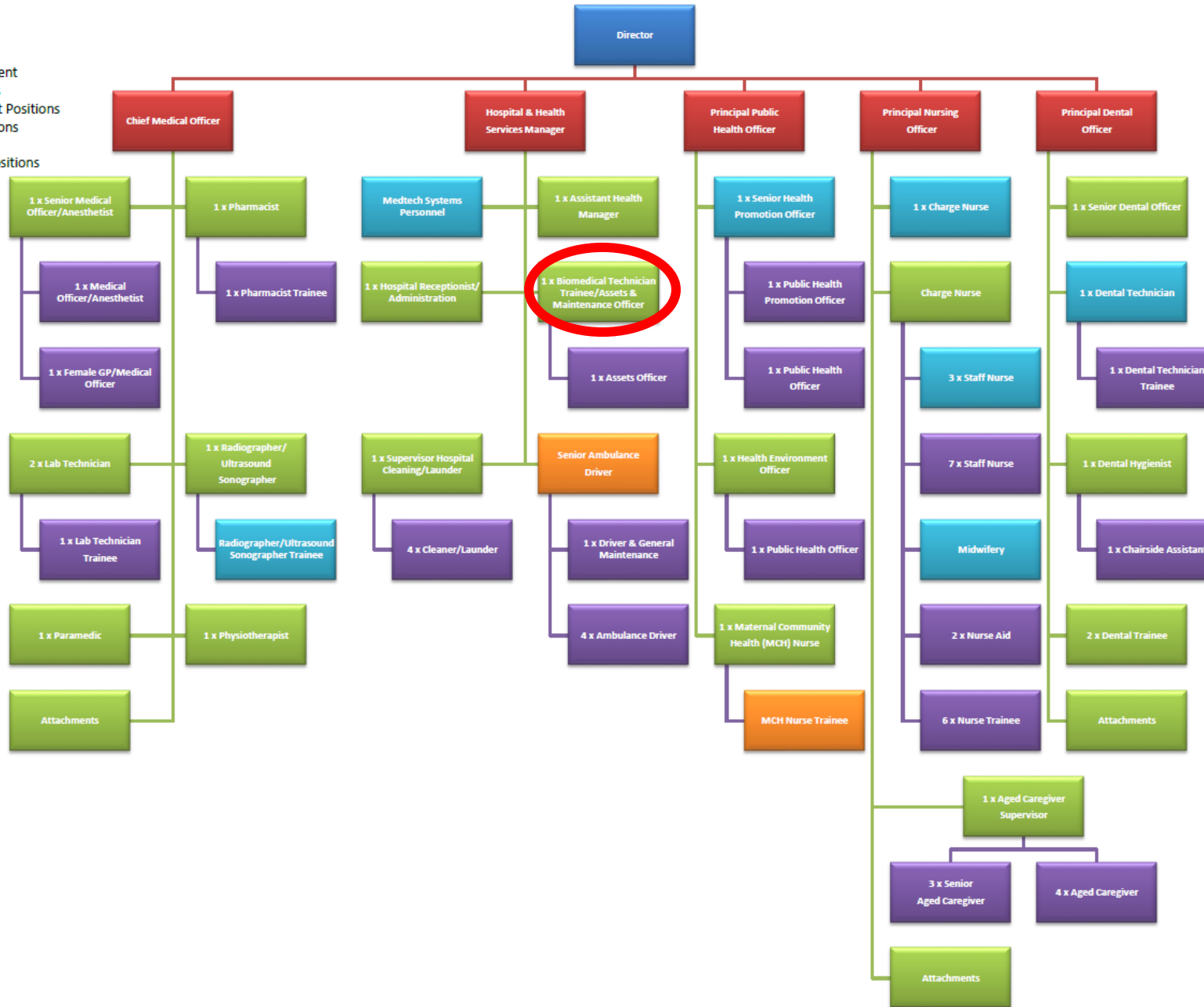
Challenges



WHAT ARE THE CHALLENGES FACED BY YOUR BIOMEDICAL SERVICES RELATING TO CHALLENGES OF HUMAN RESOURCES?

Ministry of Social Services – Department of Health Organizational Structure 2023

- Key:**
- Head of Department
 - Heads of Sections
 - Senior Permanent Positions
 - Permanent Positions
 - Vacant Positions
 - New Proposed Positions

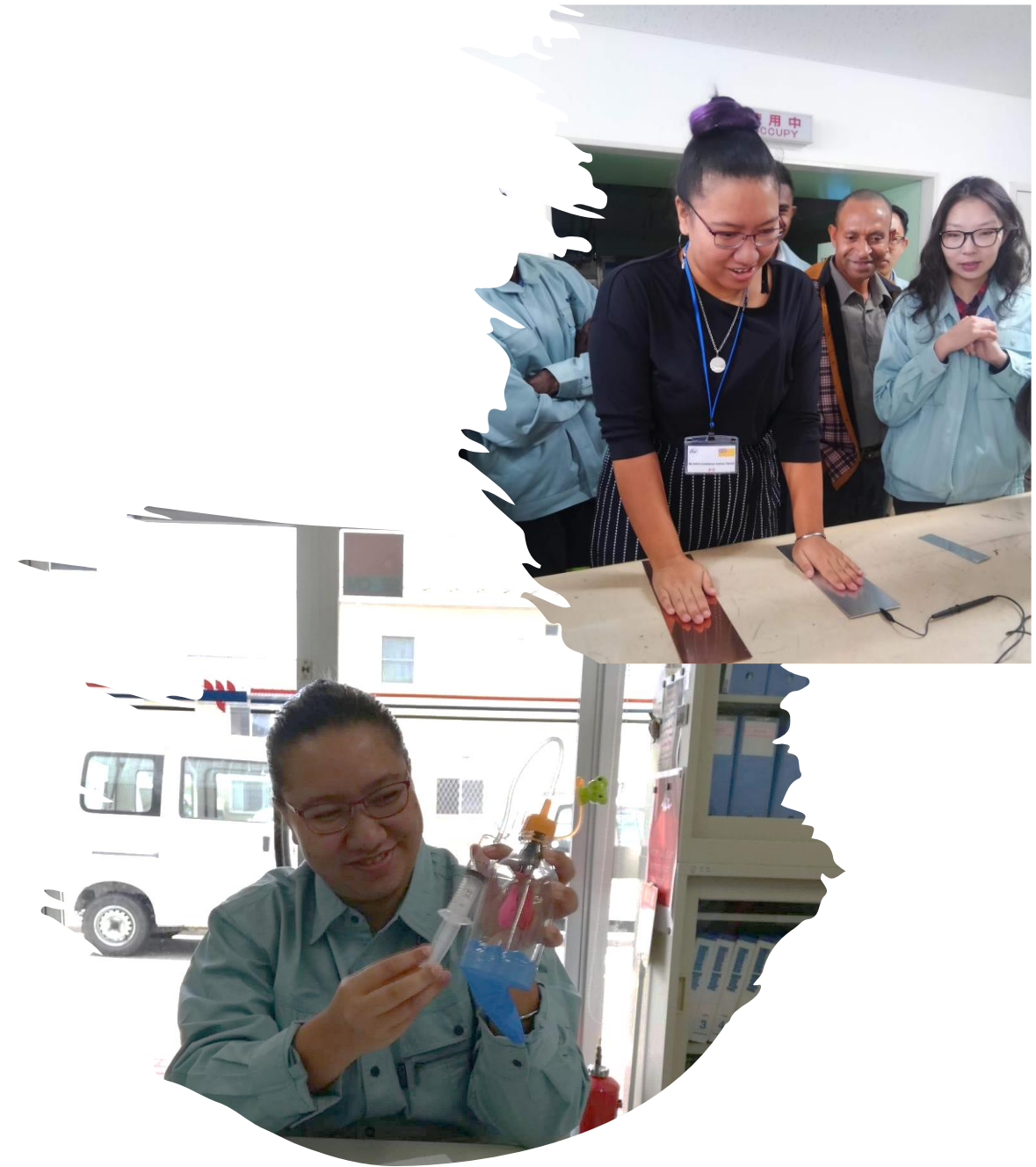


Challenges – Human Resources

Currently, there are no qualified Biomedical Technician /Engineer in Niue. Niue Foou Hospital have sought after the assistance for Biomedical Technician(s) and/or Biomedical Engineer(s) from overseas.

However, they are not always available to be on-call for our Nation, hence we will only receive them seldomly.

Due to the lack thereof of staffing in this area, installation and commissioning of medical equipment have been proven to be quite the challenge, especially during the times of the COVID-19 pandemic.



Pacific Biomedical Network Meeting

Opportunities & Development

WHAT ARE SOME OF THE OPPORTUNITIES AND DEVELOPMENTS THAT HAVE PROGRESSED IN YOUR BIOMED UNIT WITH REGARDS TO CHALLENGES OF HUMAN RESOURCES?



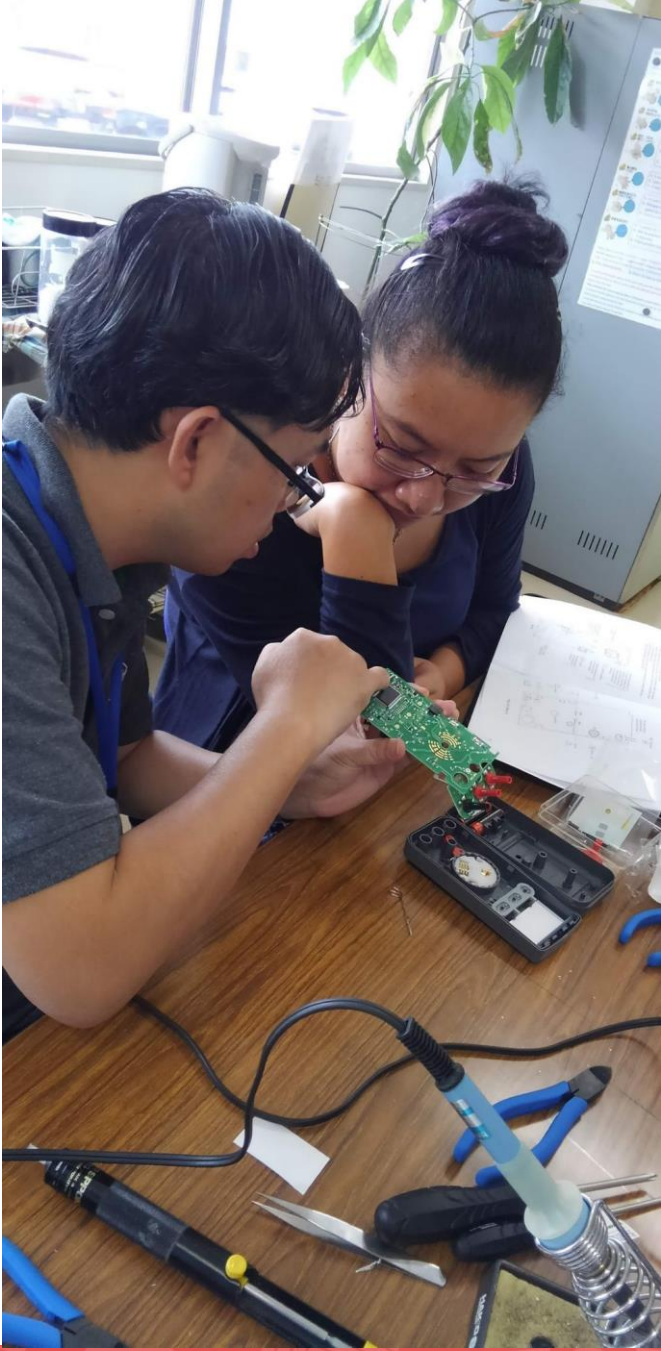


Opportunities

Medical Equipment
Maintenance and
Management Training to
Japan, April – June 2019



Opening Ceremony
Field visits: Morita (top),
Sakura Seiki (bottom)



Opportunities

Medical Equipment Maintenance
and Management Training to
Japan

April – June 2019

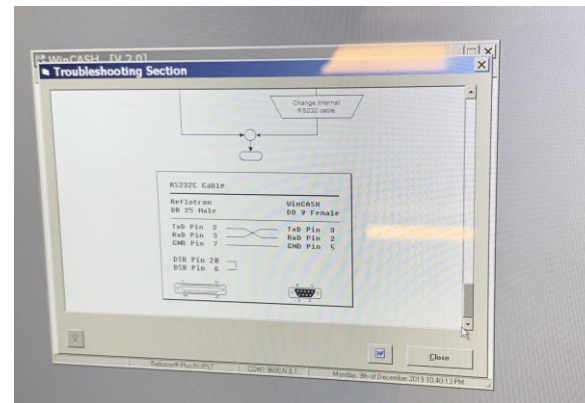
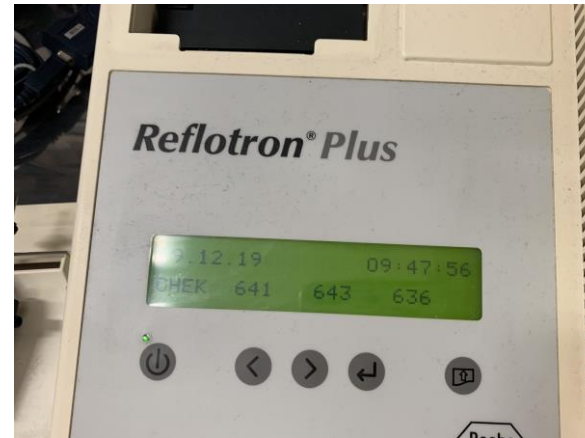
*Sharing of knowledge, teamwork
at Medisun training centre,
Koriyama*



Developments

Repair Maintenance for Reflotron® Plus biochemistry analyser, and Sysmex KX-21N hematology analyser, with Biomedical Engineer from Roche Diagnostics, Mr. Paul Salih, New Zealand.

December 2019





Developments

Installation of BioFire® FilmArray® Torch System via Microsoft Teams during COVID-19 pandemic with our lab technician, Ms. Andy Manu

March 2021

Developments

Installation of new X-ray machine with technician from New Zealand, Mr. Karl Wagener
June 2021



With some muscle assistance from our nurses



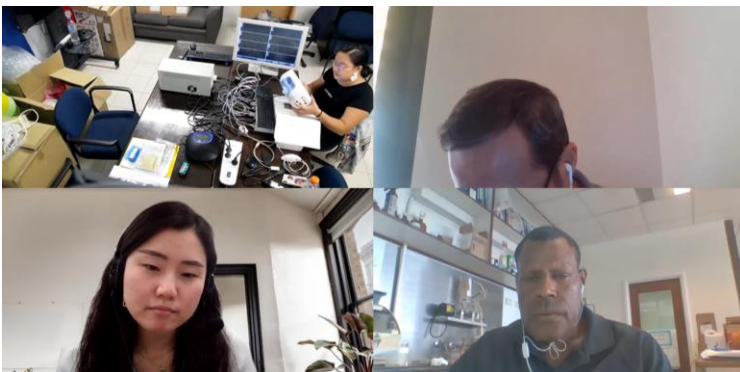
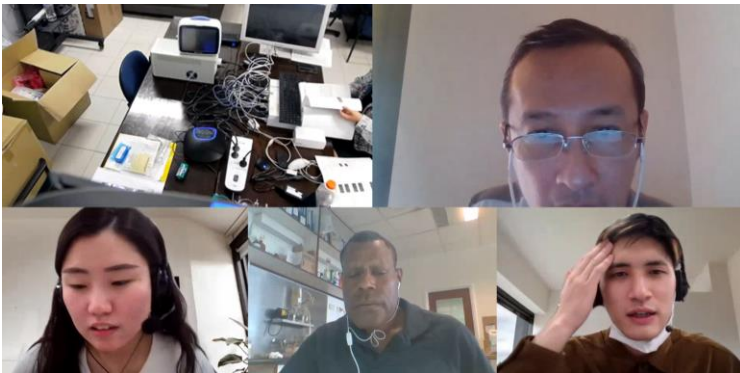


Developments

Installation and training for Central Monitor and Bedside Monitor via Microsoft Teams during COVID-19 pandemic, February – March 2022.

With assistance from:

Mr. Reinante (Phillipines), Ms. Mana Yamaguchi (Japan), Mr. Shota Hoshida (Japan), Mr. Wilson Dakul (Papua New Guinea), Mr. Jovaan Talagi-Hekesi (Niue)



Developments

Visit from WHO Biomedical Consultant, Ms. Sunema Talapusi, for urgent maintenance for some of our medical equipment

November 2022



Recommendations

3 MAIN RECOMMENDATIONS FOR NIUE (**PRIORITY AREAS**)

#1 - It is recommended for Niue Foou Hospital to procure basic but essential medical test equipment to use during installation and preventative maintenance work.

#2 - Niue Foou Hospital should also have continuous professional development (CPD) for biomed technician trainee to further develop technical knowledge and skills.



Recommendations

3 MAIN RECOMMENDATIONS FOR NIUE (**PRIORITY AREAS**)

#3 - The WHO biomedical consultant proposes an exchange partnership programme between Niue and Samoa biomedical engineering unit. It is recommended for the local biomedical technician trainee to attach to the Samoan biomed unit for a month to experience the workflow and overall setup of the biomed unit. It is proposed that when the Niuean biomedical technician trainee is in Samoa for capacity building, one of the Samoan biomed staff will cover the biomed work in Niue.



A scenic view of a rocky coastline. A large, overhanging rock formation dominates the upper half of the frame. Below it, a pool of clear, turquoise water is nestled among the rocks. The sky is blue with some clouds. The text "Fakaauē lahi 😊 Thank you" is overlaid in white, with a white underline under "Fakaauē lahi".

Fakaauē lahi 😊 Thank you