

# Pacific Heads of Health

Réunion des directeurs de la santé du Pacifique

Emergency Medical Teams  
in the Pacific

# Pacific EMT Development

- As one of the most vulnerable regions to outbreaks and natural disasters, and with significant access constraints, national EMTs are a critical component of health security in the Pacific
- Significant expansion of national EMT coverage in the Pacific in 2018/2019:
  - One internationally verified team: FEMAT (Fiji)
  - Five established national teams: KukiMAT (Cook Islands), CNMI EMT, SOLMAT (Solomon Islands), TEMAT (Tonga) and VanMAT (Vanuatu)
  - Plans underway and funding confirmed to support seven additional teams in French Polynesia, Kiribati, RMI, FSM, Palau, Samoa and Tuvalu



Pacific EMTs supporting national and regional response – Measles, TC Harold and COVID-19



# EMERGENCY MEDICAL TEAMS SUPPORT TO SAMOA MEASLES OUTBREAK RESPONSE



In 2019, the Pacific island country of Samoa with a total population of approximately 200 000 experienced an unprecedented **outbreak of measles**. Between October 2019 and January 2020, the country reported **more than 5700 cases**, **83 measles-related deaths** and **more than 1800 hospitalizations**.

**18** international Emergency Medical Teams (EMTs) deployed to support Samoa's measles outbreak response

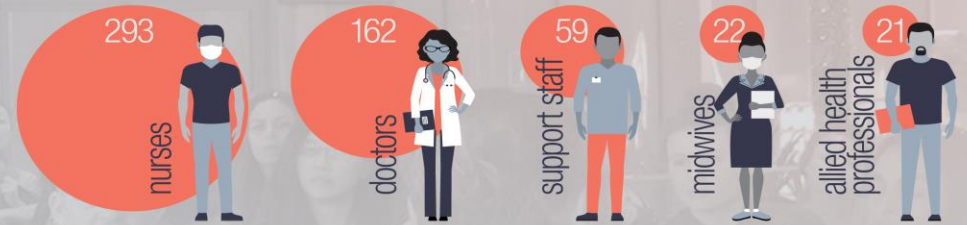


**134 499** individuals  
= **95%** of eligible population

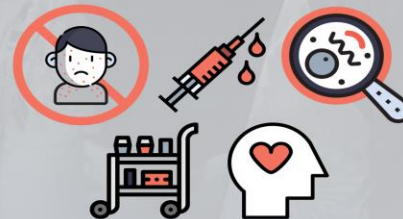


vaccinated against measles in a massive campaign over several weeks

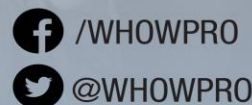
**557** total EMTs personnel deployed to support Samoa measles outbreak response



Working hand-in-hand with Samoan health workers, EMTs provided support in:



- Measles case management
- Vaccination
- Epidemiology and surveillance
- Provision and maintenance of medical equipment and supplies
- Mental health and psychosocial support to staff and patients



# Moving Forward – 2020/2021

- Pacific EMTs to support COVID-19 response International EMTs for emergency response efforts in the Pacific – opportunities and challenges
- Continue to support national EMT development in the Pacific through EMT orientation workshops, team member trainings and simulation exercises
- Plan and implement an EMT Coordination Cell (EMT-CC) training in the Pacific
- Support the establishment and operations of Health Emergency Operations Centres to strengthen health emergency response coordination