



Heads of Health Meeting

(virtual mode)

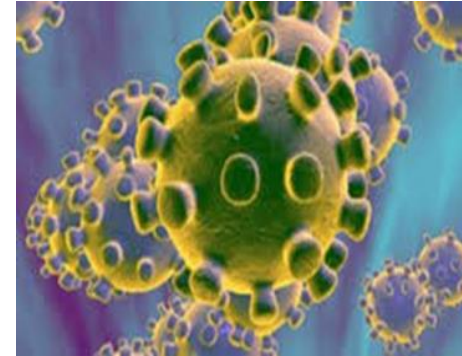
July 22-23, 2020

College of Medicine, Nursing & Health Sciences (CMNHS)

Fiji National University (FNU) - Updates


COVID-19 pandemic impacts – on CMNHS operations

- Tested CMNHS systems on how it can/plans to operate during extraordinary situations eg during emergencies like COVID-19 pandemic
- CMNHS went into early mid-semester break in semester 1, and pushed back commencement of semester 2;
- Suspension of face-to-face (F2F) classes and accelerated the shift to online classes...but F2F classes resumed in July but complied with Fiji Government National COVID-19 guidelines
- Adjustments to CMNHS Almanac and re-programming of activities (L&T, research & projects) eg rescheduling of May CMNHS graduation; postponement of Pasifika Health Professions Education Symposium
- CMNHS (&FNU broadly) adapted its systems to accelerate the shift to online learning, flexibility on student timing to submit assessed work + developed FNU-CMNHS COVID-19 Response Plan




FIJI NATIONAL
UNIVERSITY

COLLEGE OF MEDICINE,
NURSING AND HEALTH
SCIENCES



COVID-19
CORONAVIRUS DISEASE 2019



COVID-19 EMERGENCY RESPONSE PLAN

Version 7 July 3, 2020

COVID-19 pandemic impacts – on CMNHS students

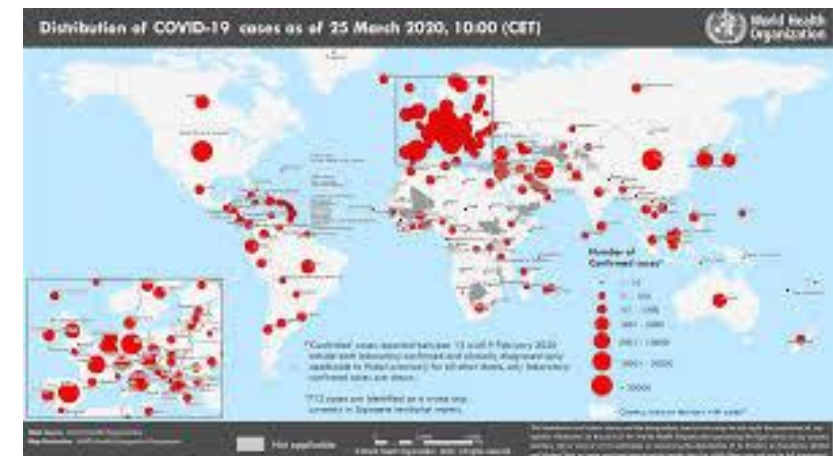
- Adapting to online learning - students showing issues including internet connectivity, lack of devices to access materials online, psychologically not geared to continue studies (differ among PICs & students)
- 40+ regional students were repatriated to their home countries (Tokelau, A-Samoa, Timor-Leste etc) for safety and in preparation for planned regional closure of borders
- Regional students pursuing clinical focused programs who got stuck in Fiji were not allowed on the clinical floor by Fiji-MOHMS, and were advised to either return to their home countries to do clinical attachments by Aug 3rd or defer their studies
- Fiji-MOHMS gave the approval for regional students back on the clinical floor in early July – but repatriated students still not able to return given the closure of borders regionally
- Some Fiji students had to defer studies as they were involved in front line work to address/contain COVID-19; Discontinuation/deferral of studies for a few (esp regional students doing clinical focused programs)



COVID-19 pandemic impacts:

- Pacific countries with students undertaking studies at FNU
- Sponsors/scholarship schemes

- Created panic among PICs – PICs responded by immediately repatriating their students back home; PICs without budget provisions to pull back their students were worried about the safety, health and welfare of their students who got stuck in Fiji – but this pushed efforts for CMNHS to develop its COVID-19 Response Plan
- PIC Embassies + sponsors continued to engage with CMNHS through the Regional and academic offices to obtain periodical updates on CMNHS operations, responses and plans regarding regional students
- Sponsors/scholarship offices:
 - Set their budget allocations to deal with indirect impacts of COVID-19 ie deferral of studies, repatriation costs, extended living expenses for scholars due to closure of borders;
 - Maintained contact with the CMNHS through the Regional office + academic staff on individual study plans OR deferral plans chosen by students sponsored by their scholarship scheme



CMNHS operating under the 'new normal'

- MBBS Years 4-5, Final Year Allied Health Workers & Regional PG students have been allowed into the clinical spaces in sem 2 but complying with personal distancing/IPC restrictions of MOHMS
- Clinical attachments for Years 1 & 2 in other programmes are on hold – for review subject to how COVID situation unfolds
- Fiji MOHMS have commenced remodelling of their structures with the Emergency Operating Command Centres post covid-19 in place within the Divisions & Subdivisions
- CMNHS will have to align & engage itself into these changes and remodelling structures ensuring the learning outcomes, graduate attributes and clinical competencies of our programmes are attained



Future plans for delivery of training programs

- Shift to fully online learning OR blended mode of learning across the region during the 'new normal' times
- For clinical programs:
 - Work is underway within CMNHS to finalise honorariums in selected PICs; finalise MOUs to facilitate L&T in-country
 - Discussions underway with RACS & SPC to organise remote support for PG clinical students to pursue clinical attachment in-country
- For non-clinical programs
 - CMNHS is working on strengthening its systems to roll out online learning to the region – & also consider POLHN station support across the region
 - CMNHS continues to engage with PICs to assess facilities and resources for students to access materials online; set, sign and implement MOUs with PIC health Ministries
 - CMNHS working to bolster ties with sister academic institutions across the region to share resources to deliver L&T



CMNHS Highlights/Updates – Learning & teaching

- FNU celebrated its 10th anniversary this year (CMNHS being the merger of 2 oldest health institutions in the region – FSMed & FSN)
 - Outgoing Vice Chancellor commemorated/officiated at the event held at Pasifika Auditorium
- Blended & Moodle on line learning and teaching is now the norm although face to face is currently an option
- Ongoing monitoring of regional sponsored students conducted; weighing out decisions whether to continue or defer studies
- Fiji Government will not sponsor new student placements for MBBS & Oral Health in 2021
 - Opportunity for increased intake for MBBS & Oral health in 2021 from regional countries (matched against revised FNU-CMNHS Program Minimum Entry Requirements-MER)



CMNHS Highlights/Updates – Learning & teaching

- 7 new CMNHS programmes were approved by Senate in 2020 meeting the health needs in the region:
 - Certificate IV in Universal Treatment for Substance Abuse Disorders
 - PGD Emergency Nursing
 - PGD Mental Health Nursing
 - PGD Sexual Reproductive Health
 - PGD Human Nutrition
 - PGD Pathology
 - Master in Emergency Nursing
 - Master by Research
 - Doctor of Philosophy (HDR)
- Revised MER & 2020 CMNHS Student Admission Guideline were also approved by Senate
- 27 of the UG & PG programmes were approved for Fiji Higher Education Commission recording in 2020
- CMNHS received the Accreditation for Bachelor Medical Laboratory Science from AIMS & Health Services Management (HSM) program from Australasian College of HSM

Student statistics & regionalism:

In 2020, >17% of CMNHS students enrolled are from the region (outside of Fiji). Solomon Is, Kiribati, Vanuatu and Tonga comprise the majority of regional students.

During CMNHS orientation day, 14 flags of Pacific islands represented at CMNHS were raised to show the commitment of CMNHS (FNU broadly) to service the region in terms of health education.

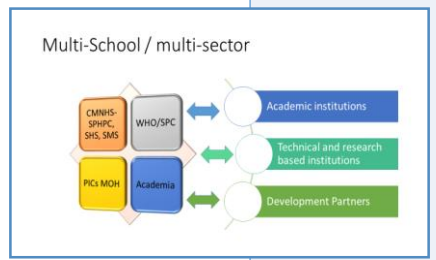


Support program accreditation work of CMNHS:

- 1) PG Health Services Management (HSM) accredited by the Australian College of HSM – this allows graduates to be recognized by the ACHSM.
- 2) CMNHS staff observed Australian Medical Council accreditation of Australian UG medical programs held in Melbourne – this will help inform accreditation plans for CMNHS MBBS program.

Supported academic program design & review work of CMNHS:

- 1) Consultation workshop for PG Mental health program to inform planning to design Masters Medicine - Psychiatry program;
- 2) Consultation for PG Family Medicine program to retrospectively assess delivery and put in place measures to improve in the long term amid rising levels of NCDs and chronic diseases

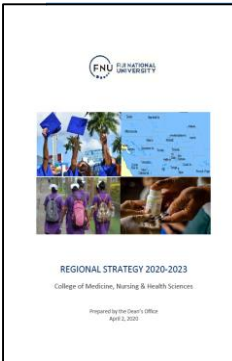


Connections and partnerships management:

- 1) Helped connect CMNHS & sponsors, PIC governments and embassies around regional students' safety, academic progress and welfare esp during COVID-19 pandemic
- 2) Working with SPC & RACS to explore options around supporting regional students who opt to continue their clinical programs in-country (given the lockdown status due to COVID-19)

Health education delivery & capacity support:

- 1) 3 staff represented CMNHS at the Heads of Nursing seminar in Nadi to present nurse training programs on offer at CMNHS;
- 2) Supported CMNHS staff at the Regional Physiotherapy Technical Meeting held in Nadi;
- 3) Supported CMNHS staff & students at the Regional Ultrasound Training Course in Obstetrics and Gynecology workshop



CMNHS Regional Strategy 2020-2023: This Strategy has been appraised internally, and will be shared with partners for inputs and comments before launching – launching tentatively set for mid August 2020. This Strategy will take over from the STHWP as the current agreement ends in Dec 31, 2020.

Research (FIPHR) highlights, updates



STRATEGIC PRIORITY AREAS

1 Creating a High Quality Research Environment

2 Promoting Research Dissemination and Translation

3 Providing Research Capacity Development

4 Governance and Resourcing of FIPHR





PROGRESS

- Inauguration of the Higher Degree by Research Programme at CMNHS on the 9th of July;
- Establishment of five (5) new International collaborators and continuation of publishing manuscripts;
- Inauguration of C-POND as a WHO Collaborating Centre for Obesity Prevention and Management;
- Mentoring of staff on Communicable Diseases Research to be replicated in the region; and
- Technical support is available to assist countries in the development and implementation of research



KEY CHALLENGES

- COVID-19 pandemic; delays with execution of certain research activities that included work in communities
- Evaluation and restructuring of plans to adapt to the *'new-normal'*
- Divergence of Funding targeted for the pandemic and not on other Research areas by Funding Agencies
- Unresponsive Regional Countries to undertake and promote Health Research



WAY FORWARD

Continuance of delivery of key objectives of various Research projects undertaken at the College across the Region

Expansion of Research areas in the region through:

- i) Watershed Interventions for Systems Health (WISH)- replication
- ii) Revitalising Informal Settlements and their Environments (RISE) - replication
- iii) Gender-Based Violence focusing on perpetrators
- iv) NCDs with Disabilities, Sexual Reproductive Health, Trade and Mental Health
- v) Ecological Foundation of Health
- vi) Formation of One Health
- v) Health and Climate Change
- vi) Death Certification short course delivery



WAY FORWARD CON'T

Promotion and dissemination of research findings in the Pacific region through the Pacific Islands Health Research Symposium (PIHRS)



College of Medicine, Nursing & Health Sciences

Pacific Islands Health Research Symposium 2020 Extraordinaire

Virtual Conference

Health Security in the Pacific: Lessons from the Pandemic Experience

Date: 25 - 27 November, 2020 | Time: 8:00am - 5:00pm FJT

Call for Abstracts

OPEN: 15 June, 2020

CLOSES: 30th September, 2020

CLICK TO SUBMIT:

https://www.fnu.ac.fj/pihrs_abstract

Health Systems Challenges

Non-Communicable Diseases

Patient Management Perspectives

Sexual Reproductive Health

Economic Implications